

2022



DREAMCATCHER PROMOTIONS



Canada's Largest Indigenous Owned Promotional Company

Table of Contents



Apparel

2-11

Tees • Hoodies • Jackets • Vests • Headwear • Uniforms



Bags + Totes

12-15

Utility • Duffel • Backpacks • Shopping • Thermal



Drinkware

16-19

Mugs • Bottles • Tumblers • Shakers • Glassware



Office + Tech

20-23

Stationery • Flash Drives • Speakers • Power Banks



Home + Office

24-27

Umbrellas • Sport • Stress Relievers • Tools



Travel + Safety

28-29

Car Kits • Cargo Totes • Card Holders • Luggage Tags



Tradeshow

30-35

Lanyards • Table Runners • Banners • Flags • Tents



OUR STORY

CANADA'S LARGEST INDIGENOUS OWNED AND OPERATED PROMOTIONAL COMPANY

Dreamcatcher Promotions is an Indigenous owned business offering high quality assured service to our customers from coast to coast. We have been in operation since 2012.

Every day we help each of our customers express something about themselves, whether it is a personal

brand or a corporate one. Branding is the easiest and most effective way of developing loyalty and recognition for your organization, community, business or sports team. We take pride in working with our clients to meet their objectives and custom work that will help bring their brand to life.

Dreamcatcher Promotions is proud to say that we are the largest Indigenous owned Promotional E-commerce site in Canada. We provide a variety of clothing and sports apparel with a wide range of styles, fabrics, colors, and sizes created by winning brands at competitive rates.

Looking for innovative promotional products for your conference, business or organization? We at Dreamcatcher Promotions are committed to bringing the best brands of pens, stationery, drinkware, sports bags, convention totes, and much more to highlight your brand.





ATC™ Everyday Cotton Tee

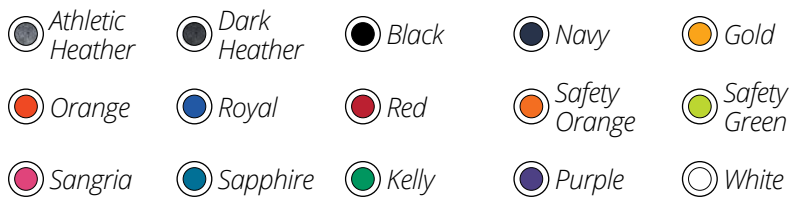
- 9.1-oz, 100% cotton
- Available in Youth Sizes (ATC1000Y)
- Compacted yarns to minimize shrinkage
- Available in Ladies Cut (ATC1000L)
- Taped neck and shoulders
- *90/10 cotton/polyester
- Tear away label
- **50/50 cotton/polyester
- Classic fit



Available Sizes: S-6XL

ATC™ Everyday Cotton Blend Tee

- 9.1-oz, 50/50 cotton/polyester
- Taped neck and shoulders
- Compacted yarns to minimize shrinkage
- Classic fit
- Comfort Dry fabric blend offers breathability and wicks moisture away from the skin
- Available in Youth Sizes (ATC5050Y)
- Available in Ladies Cut (ATC5050L)
- Tear away label



Available Sizes: S-6XL





ATC™ Pro Spun™ Tee

- 8.3-oz, 100% ring spun performance polyester jersey with wicking technology
- Side seamed
- Taped neck and shoulders
- Tear away label
- Moisture wicking
- Breathable
- Snag resistant
- Commercial laundry tested
- Classic fit
- Available in Youth Sizes (ATC3600Y)
- Available in Ladies Cut (ATC3600L)

- Orange
- Carolina Blue
- Forest Green
- Gold
- Maroon
- Sapphire
- Purple
- True Navy
- True Red
- True Royal
- Black
- Coal Grey
- White

Available Sizes: XS-4XL

ATC™ Eurospun® Ring Spun Baseball Tee

- 6.8-oz, 100% combed and ring spun cotton
- Ultra soft 30 single jersey
- Tear away label
- Modern fit
- *95/5 cotton/viscose
- **60/40 cotton/polyester
- Available in Youth Sizes (ATC0822Y)
- Available in Ladies Cut (ATC0822L)

- White/Camo
- White/Pink Camo
- White/True Navy
- White/Black
- White/True Red
- White/True Royal
- Athletic Grey*/Black Camo
- Athletic Grey*/Charcoal Heather **
- Athletic Grey*/Cardinal Heather **
- Athletic Grey*/Navy Heather **

Available Sizes: XS-4XL





The North Face® Skyline Fleece Full Zip Jacket

- 11-oz, 96/4 recycled polyester/ elastane
- Stretch peached-face fleece with brushed interior
- Vislon® centre front zipper
- Reverse coil zippered chest and hand pockets
- Micro-elastic binding at back collar and back hem
- High-density The North Face® logo heat transfer on left chest
- Modern fit

Breathable: Mid-weight fabrics that help regulate body temperature.

Stretch: This product contains materials with stretch that allows for a greater range of mobility.

Recycled content: Made from post-consumer, recycled content.

Available Sizes: S-3XL

CJ1611

Nike® Club Fleece Pullover Hoodie

- 13.8-oz, 72/20/8 cotton/polyester/ organic cotton
- 100% cotton jersey lined 3-panel hood with flat tonal drawstrings
- Classic fit
- Taped neck
- Set-in sleeves
- Crossover neck line
- Contrast embroidered Swoosh logo at upper left chest



- Dark Heather
- Anthracite
- Black
- Navy
- White

Available Sizes: S-4XL

CJ1614



Nike® Club Fleece Crew

- 13.8-oz, 72/20/8 cotton/polyester/organic cotton
- Classic fit
- Tapered neck
- Set-in sleeves
- Contrast embroidered Swoosh logo at upper left chest

- Dark Heather
- Anthracite
- Black
- Navy
- White

Available Sizes: S-4XL

ATC™ Everyday Fleece Hooded Sweatshirt

- 13-oz, 50/50 cotton/polyester fleece
- Anti-pill
- Compacted yarns to minimize shrinkage
- Classic fit
- Double lined hood with drawstring
- Available in Youth Sizes (ATCY2500)

- White
- Dark Heather
- Heather Red
- Heather Royal
- Heather Navy
- Athletic Heather
- Dark Navy
- Black
- Sapphire
- Purple
- Kelly
- Dark Green
- Sangria
- Navy
- Royal
- Gold
- Maroon
- Red
- Orange

Available Sizes: S-4XL



ATC™ Everyday Fleece Two Tone Hooded Sweatshirt

- 13-oz, 50/50 cotton/polyester fleece
- Ring spun cotton
- Compacted yarns to minimize shrinkage
- Double lined hood with flat drawstring
- Anti-Pill
- Available in Youth Sizes (ATCY2550)

- Black
- Royal
- Dark Navy
- Red

Available Sizes: S-4XL



ATC™ Everyday Fleece Full Zip Hooded Sweatshirt

- 13-oz, 50/50 cotton/polyester fleece
- Anti-pill
- Compacted yarns to minimize shrinkage
- YKK Zipper
- Double lined hood with drawstring
- Classic fit
- Available in Youth Sizes (ATCY2600)

- White
- Red
- Dark Heather
- Navy
- Athletic Heather
- Royal
- Dark Navy
- Black

Available Sizes: S-4XL



ATC™ Esactive® Vintage Crewneck Sweatshirt

- 15.7-oz, 60/40 cotton/polyester fleece
- Classic fit
- Combed and ring spun cotton
- *85/12/3 cotton/polyester/viscose
- Tear away label
- **80/20 cotton/polyester

- Athletic Heather*
- Black Heather**
- Cardinal Heather
- Navy Heather
- Charcoal Heather

Available Sizes: XS-4XL



XR-5



Ranger 3-In-1 System Jacket

- Stormtech H2XTREME® Waterproof/Breathable Outer Shell
- Zip-Out Anti-Pill Fleece Liner
- Articulated Sleeves
- Adjustable Cuffs and Hem
- Heat Reflective Mesh Lining
- Internal and External Full-Length Stormflap
- Sealed Seams
- Articulated Adjustable Hood
- Removable Hood
- External Media Pocket
- Brushed Tricot Hand Warmer Pockets
- Internal Zippered Security Pocket
- Women's Cut, black only (XR-5W)

● Black

● Navy

Available Sizes: S-3XL

GSX-2

Axis Thermal Jacket

- D/W/R Outer Shell
- Elasticized Cuffs
- Internal Pocket
- Front Zippered Pockets with Garages
- Embroidery Access
- Reverse Taped Center Front Zipper
- Dropped Back
- Brushed Tricot Hand Warmer Pockets
- External Media Pocket
- Women's cut (GSX-2W)
- Youth Sizes (GSX-2Y)

● Black/Black*

● Black/Sport Red

● Black/Royal



Available Sizes: S-3XL

*Available up to 5XL

RX-1



Synthesis Stormshell

- STORMTECH H2XTREME® 10000/6000 Waterproof / Breathable Outer Shell
- YKK® AquaGuard® Center Front Zipper
- Multi-Adjustable Hood
- Pit Zip Core Venting
- Ergonomic Zipper Pulls
- Abrasion Resistant Hand Pockets
- Sealed Seams
- Articulated Elbows
- Single Hand Hood Adjustments
- Contoured Hem
- Sleeve Pocket
- Women's Cut, (RX-1W)

● Black*

● Bright Red

● Azure Blue

● Jewel Green

Available Sizes: S-3XL

*Available up to 5XL



BRIDGEWATER ROOTS73 INS JKT

- Centre front double placket with snap closures over two-way metal zipper
- Lower flap pockets with snap closure
- Interior zipper pocket
- Upper welt handwarmer pockets with reverse coil zipper
- Detachable zip off contour hood with drawcord and exterior cordlocks
- Detachable faux fur trim
- Rib knit storm cuffs
- Dropped back fishtail hem
- Easy grip zipper pulls
- Engraved metal snaps
- Adjustable tabs with buckle at back hood
- Articulated elbows
- Ergonomic sleeves
- Elbow patches
- Interior backpack carrying straps
- Men's Cut (19411)

● Black

● Loden

Available Sizes: XS-2XL

1864451

Columbia Men's Tipton Peak Insulated Jacket

- Shell: Ultra Touch 100% nylon Insulation
- Lining: Omni-Heat Reflective™ 210T taffeta 100% polyester
- Insulation: 150g Microtemp XF II 100% polyester
- Insulation: 100g Microtemp XF II 100% polyester
- Omni-Tech™ waterproof/breathable critically seam sealed
- Omni-Heat™ thermal reflective
- Attached, adjustable hood
- Chin guard
- Interior security pocket
- Zippered hand and chest pockets
- Adjustable cuffs
- Drawcord adjustable hem
- Drop tail

Available Sizes: S-2XL



DF7680

Dryframe® Dry Tech Insulated Fleece Jacket

- Exterior: 11.3-oz, 100% DWR polyester fleece with 4.8-oz, 100% DWR polyester taffeta at front panels
- Fill: 3.3-oz, poly-fill
- 100% brushed polyester tricot lined 3-panel hood with drawstring and toggles
- Spandex binding on cuffs and hem
- Water repellent, Wind resistant
- Insulated
- Reflective features
- Scuba hood
- YKK zippers
- Limited lifetime warranty
- Classic fit
- Women's Cut (DF7680L)

Available Sizes: XS-4XL

J0760



Coal Harbour® Premier Soft Shell Jacket

- 14.3-oz, 100% polyester bonded with 100% polyester brushed tricot
- 8000mm/800g/m2 waterproof/breathability rating
- Full length inner storm flap with chin guard
- Internal storm cuffs
- Wind resistant
- YKK zippers
- Classic fit
- Women's Cut, (L0760)



Available Sizes: XS-4XL

J7603

Coal Harbour® Everyday Soft Shell Jacket

- 13.5-oz, 100% polyester with mechanical stretch bonded with 100% polyester micro fleece
- 1000mm/1000g/m2 waterproof/breathability rating
- Full length inner storm flap with chin guard
- Anti-Pill
- Wind & water resistant
- YKK zippers
- Classic fit
- Women's Cut, (L7603)



Available Sizes: XS-6XL



J7604

Coal Harbour® Colour Block Soft Shell Jacket

- 13.5-oz, 100% polyester with mechanical stretch bonded with 100% polyester micro fleece
- 1000mm/1000g/m2 waterproof/breathability rating
- Contrast panel at sides and underarms
- Full length inner storm flap
- Breathable
- Stretch
- Anti-Pill
- Wind & water resistant
- YKK zippers
- Classic fit
- Women's Cut, (L7604)



Available Sizes: XS-4XL





The North Face® Dryvent™ Rain Jacket

- 40D 85 g/m²/4.1 oz lyd DryVent™ 2.5L—100% nylon ripstop
- Waterproof, breathable, seam sealed DryVent™ shell
- 100% windproof fabric
- Attached, fully adjustable hood
- Storm flap with Velcro® closure covers front zipper
- Zippered underarm ventilation
- Covered, secure-zip hand pockets
- Stows in left hand pocket
- Adjustable Velcro® tab cuffs
- Drawcord and toggles at hem
- The North Face® logo on back right shoulder
- Classic fit
- Women's Cut, (NFOA3LH5)

Available Sizes: S-3XL

DF7673

Dryframe® Dry Tech Insulated Vest

- Exterior: 2-oz, 100% DWR polyester taffeta
- Fill: 6.9-oz, DuPont™ Sorona® eco-friendly insulation
- Full length inner storm flap with chin guard
- Spandex binding on armholes and hem
- Wind & water resistant
- Reflective features
- YKK zippers
- Embroidery access
- Interchangeable components
- Detachable carabiner keychain located in left pocket
- Limited lifetime warranty
- Women's Cut, (DF7673L)



● Black

○ Platinum Grey

Available Sizes: XS-4XL

S16642



Spyder Men's Pelmo Puffer Vest

- 100% polyester nail head weave fabric
- Detachable hood with bungee cord and stopper
- Invisible zipper inside chest for embroidery access
- Zippered handwarmer pockets
- Modern fit
- Deco Eligible
- Women's Cut, (S16641)

● Black

○ Polar

○ Red

Available Sizes: S-3XL

9L594L



Jacquard Cable Knit Cuff Toque w/ Faux Fur Pom-Pom

A comfortable and warm acrylic jacquard cable knited toque with a beige faux fur pom pom on top. Available in 5 different knit colours, ready to be embroidered with your logo on the cuff.

- Black
- Charcoal
- Navy
- Oatmeal
- White

Starting at \$12.50

9Y530M

Acrylic Jacquard Cable Knit Cuff Toque

A comfortable and warm jacquard cable knited toque. Available in 5 different knit colours, ready to be embroidered with your logo on the cuff.

- Black
- Charcoal
- Navy
- Heather

Starting at \$10.30



C100



ATC™ Everyday Knit Cuff Toque

- 100% acrylic
- 3" folding cuff

Starting at \$7.50

- Athletic Gold
- Athletic Green
- Black
- Camo
- Athletic Oxford
- Concrete
- Black Heather
- Navy
- Neon Blue
- Neon Lime
- Neon Pink
- Neon Yellow
- Orange
- Red
- Royal
- White

C112

ATC™ Everyday Rib Knit Slouch Beanie

- 100% acrylic

Starting at \$5.25

- Athletic Gold
- Black
- Navy
- Charcoal Heather
- Concrete
- Neon Lime
- Orange
- Raspberry
- Pink
- Red
- Royal





Avalanche Knit Beanie

The stretch fit beanie that works at keeping you warm with its soft, acrylic knit construction. This heathered fine gauge knit beanie is a top performer in chilly conditions.

- Soft and Warm Acrylic Knit Construction
- Stretch Fit
- Heathered Design

- Carbon
- Red
- Kiwi
- Blue

Starting at \$14.00

C140

ATC™ Sandwich Bill Cap

- 100% cotton twill
- 6-panel
- Adjustable hook and loop closure

Starting at \$7.75

- Black/Khaki
- Black/Tropical Pink
- Black/White
- Black/Gold
- Coal Grey/Black
- Coal Grey/Lime
- Navy/Gold
- Gold/Black
- Khaki/Navy
- Hunter/Khaki
- Navy/White
- Red/Navy
- Royal/White
- White/Navy
- Stone/Black



C130

ATC™ Everyday Cotton Twill Cap



- 100% cotton twill
- 6-panel
- Adjustable hook and loop closure
- *97/3 cotton/spandex

Starting at \$5.75

- Black
- Hunter
- Maroon
- Authentic Blue
- Khaki
- Purple
- Camo
- Kelly
- Red
- Concrete
- Lime
- Royal
- Camo Leaf*
- Navy
- Tropical Pink
- Coal Grey
- Orange
- White

6H647M

6-Panel Mesh Snapback Trucker Cap

- 6 Panel Enzyme Washed Deluxe Chino Twill/Soft Nylon Mesh
- Buckram laminated front panels
- Pre-curved peak with 8 rows of stitching
- Plastic adjustable back strap

Starting at \$10.40

- Charcoal/Flo Orange
- Charcoal/Neon Yellow
- Brown/Tan
- Lime/Slate
- Black/Tan
- Black/Slate
- Navy/Slate
- Olive/Tan
- Red/Black
- Slate/Black
- Black/White
- Orange/White
- Navy/White
- Red/White
- Royal/White
- White/Black
- White/Navy
- Black
- Charcoal
- Navy





Non-Woven Cut-Out Handle Tote

- 14" x 16"
- Non woven 65 gram polypropylene
- Strong reinforced heat sealed seams
- Holds up to 5 lbs. (2.2 kgs.)
- Convenient cut-out handle
- A durable alternative to gift wrapping those smaller items

- A lightweight alternative to use in retail stores, as handouts and to take the place of smaller plastic shopping bags

Starting at \$1.37

- Black
- Lime
- Red
- Forest
- Purple
- Royal

Non-Woven Economy Tote

- 15" x 16"
- Non woven 75 gram polypropylene
- An eco friendly alternative to plastic bags
- Two self material handles/ shoulder straps

- Give your next convention, tradeshow or promotion that extra advertising edge

Starting at \$2.15

- Black
- Black Cross Hatch
- Forest
- Light Blue
- Lime
- Lime Cross Hatch
- Navy
- Orange
- Pink
- Purple
- Red
- Red Cross Hatch
- Royal
- Royal Cross Hatch
- White
- Yellow



Non-Woven Jumbo Grocery Tote

- 13.75" x 16.25" x 7.25"
- Non woven 90 gram polypropylene
- Lots of colour options in this sturdy and durable bag

- New larger size for all of your grocery needs
- This one bags replaces up to four standard sized plastic bags

Starting at \$3.00

- Black
- Lime/Black
- Red/Black
- Navy/Black
- White/Black
- Royal/Black

Non-Woven Insulated Lunch Cooler

- 7.125" x 10" x 3.5"
- Non woven 75 gram polypropylene
- Top hook and loop fastener and front slash pocket
- Inside metallic 2mm foam lining for insulation
- CPSIA compliant

Starting at \$4.03

- Royal
- Black
- Red



Jumbo Non-Woven Drawstring Backpack



- 14.75" x 17"
- Non Woven 90 gram polypropylene
- Double cords that act as drawstring closure and straps
- Reinforced bottom corners around grommets

- Black
- Navy
- Orange
- Pink
- White
- Red
- Lime
- Royal
- Yellow
- Purple

Starting at \$2.53

Trailwood Non-Woven Drawstring Cinch

- 14" x 17.75"
- Non Woven 80 gram Polypropylene
- Front vertical zippered pocket
- Grommet hole for headphone wires
- Cords act as drawstring closure and straps for backpack

- Grey
- Lime
- Orange
- Red
- Royal



Starting at \$3.67

Quantum Blast Backpack



- 12" x 17" x 6"
- 600D Polyester
- Zippered closure to spacious main compartment
- Front zippered pocket and side mesh pocket

- Padded back and adjustable/non-detachable backpack straps
- Top carry handle
- Great for carrying books, lunch and other items

- Lime/Black
- Red/Black
- Grey/Black
- Royal/Black

Starting at \$15.30

Cooler / Lunch Bag

- 8.5" x 7" x 5.75"
- 70D Polyester
- Inside grey PEVA liner
- Three sided top zipper closure
- Non-adjustable/non-detachable carry strap
- Holds six cans
- Front slash pocket

- Black
- Lime
- Red
- Royal



Starting at \$6.33

BG301

Business Smart Briefcase



- 16.75" x 3.125" x 12.75"
- Padded laptop compartment protects and accommodates laptops up to 15.5"
- Tablet insert pocket accommodates tablets up to 9"
- The quick-reach organizer located in the zippered external compartment is perfect for stationary and media items
- The top handle has built in padding for a more comfortable grip. The brief can also be worn using the adjustable cross body strap
- The bag can hold up to 20 lbs of weight

Starting at \$18.75

BG400

Nomad Must Haves Messenger

- 15" x 4" x 11"
- Padded laptop compartment protects laptops up to 15.5", padding covers sides and base of the laptop
- Multi-compartment organizer has several areas for storing and organizing stationery and media inside the bag
- Main compartment is easily accessible by opening the magnetic snaps without having to adjust the silicone feel straps
- Top-access main compartment has zipper protection keeping contents safe
- Can hold up to 30 lbs of weight



Starting at \$31.50

SB60022

All Purpose Duffle Bag



- 22" x 9.5" x 11"
- U Shape zipper opening
- Wrap around carry handles with reinforced stitching
- Detachable front imprint compartment
- Exterior bottom feet protectors
- Adjustable/Detachable shoulder strap with swivel buckles

● Black ● Forest ● Red

● Navy ● Royal

Starting at \$48.00



Savannah Polyester Tote

- 15.75" x 16.25" x 3.5"
- 600D Polyester with two-tone Heathered 600D PVC
- Top zippered closure to spacious main area
- Two reinforced webbed handles/shoulder straps
- Front zippered pocket
- All bags have white piping
- Matches SP9462 duffle bag

Heather Grey
 Heather Red

Starting at \$8.88

3750-29

Revive RPET Waist Pack Backpack

- 17" x 16" x 18"
- 100% Recycled Water bottles
- Features a removable waist pack as the front zippered pocket
- Carries a 15" laptop inside the zippered main compartment
- Side mesh water bottle pocket

1% of EcoSmart product sales will be donated to nonprofits dedicated to protecting our planet.



Starting at \$31.48

SB60020

All Purpose Duffle Bag

- 20" x 9" x 11"
- U Shape zipper opening
- Wrap around carry handles with reinforced stitching
- Detachable front imprint compartment
- Exterior bottom feet protectors
- Adjustable/Detachable shoulder strap with swivel buckles



Black
 Forest
 Red
 Navy
 Royal

Starting at \$40.00



Corkcicle Classics 25 oz. Canteen

11.5" tall 2.75" wide at the bottom about 1.5" wide at the opening

Holds an entire bottle of wine!

The original, colourfully cool Corkcicle Canteen. It keeps drinks ice cold for 25 hours or warm for 12. Holds an entire bottle of wine and includes proprietary triple insulation, sleek, easy-to-grip flat sides, wide mouth to fit ice cubes, non-slip bottom and a screw-on cap. Made from 18/8 premium-grade Stainless Steel. Top rack dishwasher safe. FDA Compliant. Individually retail packaged.

Corkcicle logo is engraved into the bottom of the bottle.



Starting at \$56.10

Gloss White Matte Black

Corkcicle 16 oz. Coffee Mug

4.8" x 3.46" (not including handle)

The "morning person" of the Corkcicle lineup, Coffee Mug makes every day something to celebrate. Whether you're caffeinating with a hot cup of coffee or cozying up with some chamomile tea, it keeps every sip hot for up to 3 hours in style. Includes non-slip bottom, proprietary triple insulation, sleek, easy-to-grip flat sides and a clear sliding lid. Made from 18/8 premium-grade Stainless Steel. Lid is Tritan Plastic. Top rack dishwasher safe. BPA free and FDA Compliant. Individually retail packaged.

Corkcicle logo is engraved into the bottom of the mug.



Starting at \$53.06

Gloss White Matte Black





Starlight 350 mL. Traveller Mug

- 3.25" Diameter x 4.25" H
- 18/8 Stainless Steel
- Double walled with vacuum insulation
- Holds up to 350 ml. (12 fl. oz.)
- Glitter matte exterior finish with silver trim
- Clear Acrylic push on lid with sipper hole
- For use with hot and cold beverages
- Individually retail packaged
- BPA free and FDA compliant
- Stays hot up to 6 hours

Starting at \$16.48

Black
 Lime
 Red
 Silver
 Royal

Howden 500 mL. Tumbler with Handle

- 7" H x 3" Diameter
- Stainless Steel (inner 304, outer 201)
- Double walled to keep beverages hot or cold longer
- Exterior has a powder coated matte finish
- Acrylic lid push-on lid with open/close slide
- Comfortable 'D' shaped carry handle
- Hand wash only
- Holds up to 500 ml. (17 fl. oz.)
- Keeps your beverages hot up to 8 hours
- Keeps your beverages cold up to 12 hours
- The perfect travel companion
- BPA free and FDA compliant

Starting at \$23.70



350 mL. Clearview Glass Mug



- 3.25" Diameter x 4.3" H
- Borosilicate Glass
- Double walls help prevent condensation and provide aesthetic appeal
- 'D' shaped handle
- Holds up to 350 ml. (12 fl. oz.)
- For use with hot or cold beverages
- Hand wash only
- BPA free and FDA compliant

Starting at \$13.15

PK7055



Wine Not Gift Set

This gift set includes a Pinot Noir bottle cooler, corkscrew and a Starlight mug. The bottle cooler is made from non woven 90 gram Polypropylene with a dotted debossed pattern and includes an inner 2mm foam insulated interior with Aluminum liner. The corkscrew includes a Stainless Steel serrated foil blade, iron with electroplating bottle opener and

Stainless Steel corkscrew. The mug is 18/8 Stainless Steel with double walled vacuum insulation and holds up to 350 ml. (12 fl. oz.) The exterior is a glitter matte finish with silver trim. The clear Acrylic push on lid includes a sipper hole for drinking.

Starting at \$35.67

Corkscrew: Black White

Black Lime Red Silver Royal

PK6030

Sunday Fun Day Gift Set

This gift set includes a Brewmaster barrel mug and wooden bottle opener. The mug is double walled to keep your beverage cold longer. It holds up to 500 ml. (17 fl. oz.) and has a large 'D' shaped handle. The bottle opener is Stainless Steel with a comfortable Oakwood handle. It easily removes caps from your favourite brew.

Starting at \$32.13

Black Matte Copper Glossy Silver Glossy



PK7062



Coasting Along Gift Set

This gift set includes Canton Glass bottle and Creations Live Edge Wood Coasters. The bottle is frosted single-walled Borosilicate glass with a screw-on Bamboo lid. It holds up to 1000 ml. (33.8 fl. oz.) and is for use with cold beverages.

Two coasters are included and are made of formed wood with a tree slice profile to look like a live edge. Can be printed or laser engraved.

Starting at \$40.98



Colorway 300 mL. Mug



- 3.5" Diameter x 3.375" H
- New Bone China
- Glossy interior and exterior
- 'C' shaped handle
- Holds up to 300 ml. (10 fl. oz.)
- FDA compliant
- Dishwasher safe
- Microwave safe
- Each logo cannot exceed 2" W

Starting at \$4.88

- Black
- Blue
- Lime
- Purple
- Mint
- Red
- Orange
- Royal
- Yellow

GL9334

Brewmaster 550 mL. Tall Boy

- 2.5" Diameter x 6" H
- Borosilicate Glass
- Holds up to 550 ml. (18 fl. oz.)
- Shaped like a can
- For use with cold beverages
- Featuring an Ugly Beautiful Box: We've removed the unnecessary and kept it basic. No lamination, no full colour ink, no bleach or dye. It might be ugly, but it has beautiful purpose: one small win for the planet!
- Hand wash recommended
- FDA compliant

Starting at \$8.05



WB6785

The Cross-Trainer 400 mL. Small Shaker Bottle



- 3.75" Diameter x 6.75" H
- PP Plastic bottle
- Includes Plastic shaker ball that helps blend contents to a smooth consistency
- Shaker ball matches the lid colour
- Lid screws on and has a snap closure on top
- Holds up to 400 ml. (13.5 fl. oz.)
- BPA free (Bisphenol A)
- FDA compliant
- Wide mouth makes it easy to add ingredients
- Measurement markings on the side

Starting at \$5.43

- Black
- Lime
- Royal
- Red



Nowire Mousepad

- 11.5" x 7.4" x 0.242"
- 10W Qi charger and mouse mat
- Qi certified
- Fast charging
- FCC, CE-RED, UL Tested and Qi certified
- Individually retail packaged
- Simply plug in the included cord to your USB slot of your computer, set your phone on the Qi icon and watch it charge
- ¼" thick mouse pad allows for easy tracking and comfortability for your mouse

Starting at \$48.95

OR2310

Temblor™ Speaker + Wireless Charger

- 4.8" x 2.3" x 3.5"
- Wireless speaker with 33 foot (10 m) wireless range
- When plugged in, the top of the Temblor can be used as a wireless charging pad
- Up to 2.5 hours playtime
- 5 watt output
- 5W wireless charging output
- Large imprint area on 100% natural FSC-certified bamboo places; a renewable and sustainable material
- Cement made from limestone
- Micro USD charge port, includes charging cable
- Includes laser engrave on bamboo plate
- Imprint area: 1.2" x 2"



Starting at \$57.56

OR2318

Mini Sono™ Wireless Speaker

- 3" x 5.9" x 7", 5.75" diameter
- Wireless speaker with 33 foot (10 m) wireless range
- On-speaker controls with built-in microphone
- 5 watt speaker
- TWS allows you to pair with two Mini Sono™ speakers
- Perfect size for tabletop use
- Audio playback time: 9 hours @ 80% volume
- Includes charging cord
- Individually retail packaged



Starting at \$125.13



Dust Rover Desktop Vacuum



- 3" Diameter x 2.5"
- ABS
- Mini handheld vacuum for use in the office, at home and in the car
- Use to clean your desk and keyboard, at home in drawers and in the car to keep car seats and drink holders clean
- Cordless design with 2 'AA' batteries (included/not inserted)
- Push on/off button
- Instructions included
- Individually boxed

Starting at \$15.50

Portable Charging Kit

- Black or Silver EVA case
- ABS 1 Amp USB charger adapter, 5V; 1000ma output
- CE and FC certified
- UL certified, 2200 mAh capacity power bank with plastic housing
- Grade A lithium-ion battery
- Capacity: real 2200 mAh (+/- 50 mAh)
- Input: DA 5V/500mA; Output: DC 5V/1000mA
- Micro USB charging cable included
- Two mesh pockets inside case



Starting at \$20.13

- Black
- Black/Lime
- Black/Orange
- Black/Purple
- Black/Red
- Black/Royal
- Silver/Black
- Silver/Lime
- Silver/Orange
- Silver/Purple
- Silver/Red
- Silver/Royal
- Silver/White

Rotate 2Tone Flash Drive 8GB



- 2.21" x 0.43" x 0.75"
- Individually polybagged
- Flash drive folds into a protective aluminum cover
- RoHS compliant

Starting at \$12.43

- Black
- Aqua
- Blue
- Corporate Blue
- Corporate Red
- Dark Teal
- Green
- Lime
- Orange
- Purple
- Royal
- Violet



450 Sticky Note Organizer

- 6" x 3.5" x 0.75"
- Smooth PVC Leatherette
- Contains one 3" x 3" yellow sticky pad and one pink and one green 3" x 1" sticky flags (150 each colour)
- Two-sided calendar (English included. French available if requested)

Starting at \$4.22

Junior Portfolio

- 7.25" x 9.75" x 1"
- Bonded Leather
- Dual inside accordion and zippered pocket
- Business card pockets
- Three-sided zipper closure
- Individually boxed
- Paper pad and PE682 Black with Blue ink Sonota™ Glass pen included
- 100% recycled material
- High perceived value
- Affordable

Starting at \$21.52



King Edward Large Journal

- 5.5" x 8.25" x 0.625"
- Hard PU Cardboard cover
- Matching coloured elastic band closure and ribbon page marker
- 96 sheets of 70 GSM lined ivory paper
- Pen not included

Starting at \$4.52

- Orange
- White
- Navy
- Black
- Lime
- Red





Giza 3-in-1 Highlighter

- 5" x 1" x 4"
- AS Plastic
- Middle circle for your custom imprint
- Case holds yellow, pink and blue highlighters
- Great giveaway for conferences, conventions and trade shows

Starting at \$2.25

G1009

Veneno Ballpoint Pen

- 5.625"
- Heavyweight plastic and metal push-action pen.
- Decoration area: 1.5" x 0.625"
 - Recommended decorated in white or silver
- SureWrite™ medium point blue ink or 10G1009 black ink
- Available in alternate colour schemes and with stylus

Starting at \$1.59

Black
 Blue
 Red
 Green
 Orange



G1282



Alix Ballpoint Pen

- 5.75"
- Rubberized barrel and low lead refill, your writing experience will be comfortable and smooth.
- Decoration area: 2.5" x 0.625"
- Standard medium point blue ink

Starting at \$0.49

Blue
 Black
 Grey
 Purple
 Red
 Green
 Orange
 Yellow

MT8911

Turner Might 8-in-1 Screw Driver Set with LED Light



- 1.5" W x 7.5" H
- ABS and Steel
- Built-in LED light
- Three Flat and five Phillips screwdrivers
- Just fold out the screwdriver that you need
- 3 'AAA' batteries (included/not inserted)
- On/off button for LED light
- Clip to attach to your belt or clothes
- Individually boxed

Starting at \$9.60

BT28CT

25' Carpenter Tape Measure

- 3.5" W x 3.3125" H x 1.75" D
- Rubberized finish makes handling easy
- Perfect for carpenters, contractors and more
- 25 foot pull and press locking tape measure
- Convenient magnetic dual end hook
- Tape is two sided with inches and centimeters on both sides
- Tape is 1" scale with 1/16" increments
- Includes wrist strap and belt clip



Starting at \$12.00

FL8239

9 LED Flashlight



- 1" Diameter x 3.375" H
- Aluminum
- Flashlight with 9 bright LED lights
- On/off button
- Wrist strap
- 3 'AAA' batteries (included/not inserted)
- Individually boxed

Starting at \$4.93

● Black ● Silver ● Red

1430-26

Built2Work Compact Tool Kit

- Compact and efficient
- 22 Piece set
- Includes 9 bits with adapter, bit fastener, hammer, Phillips and flat head mini drivers, flashlight, screw driver handle and adapter for bits, 5 sockets, (7-10mm), tape measure, and a convenient carrying case.

Starting at \$18.73



Folding Umbrella



- 21" rib length, 42" arc
- Folds down to 15" when closed
- Pongee material with sleeve
- Eight panel umbrella
- Metal shaft with double lock
- Plastic molded grip handle
- PU wrist strap attached to handle
- Automatic open
- Hook and loop fastener tie closure

Black

Navy

Red

Starting at \$10.58

BQ4023

BBQ Tool Set

- 17" W x 5" H x 3" D
- BBQ mitt holds three stainless steel barbeque tools: Spatula, tongs, and fork
- Cotton padded mitt with lining:
- One-size heat resistant right-handed BBQ mitt
- Polyester with one side black, one side silver coated
- Do not place hot items on imprint
- Comes individually boxed with tools protected in a PVC, packed inside oven mitt



Starting at \$25.37

BHW79P

Mamma Mia Pizza cutter



- 3.625" Diameter
- Stainless steel blade
- Easily slices pizza, quesadillas and more
- Plastic blade cover for safe storage
- Dishwasher safe
- FDA approved
- Polybagged

Starting at \$4.32

SM-9350

26-Piece Deluxe Tool Kit

- Includes 6 precision screwdrivers, an extension rod, a bit driver with a plastic handle, a 10-piece screwdriver bits in a bit holder, needle-nose pliers and diagonal wire cutters with matte grip handles, 4 wrench sockets and a pair of tweezers. The 4 wrench socket sizes are 7, 8, 9, and 10 MM
- Includes a tri-fold heavy duty case with a snap closure.



Starting at \$17.80

B1822



Beach Ball

- 13" Diameter (inflated)
- 41" Circumference
- Deflates for easy storage
- Inflates by mouth
- One imprint location only
- CPSIA compliant
- Imprint on white panel or colour panel

Starting at \$2.82

Green/Red/Royal/White/Yellow

Red/White

Royal/White

SQ33Z13

Stress Relievers

Have Fun! Give 'em a good squeeze, and relax! Stress Relievers are great for trade show giveaways and events. A fun way to communicate and put a smile on someone's face. Available in countless shapes, sizes and styles.

Starting at \$3.85



468

Serenity Plush Throw

- 50" x 60"
- Super-soft 280GSM, 100% polyester
- Individually vinyl bagged
- Soft premium quality feel at an affordable price point

Starting at \$36.67

Black White Royal Red Navy

F-FL34

3.5" Pelican Lures Casting Spoons

- Metallic glitter (sparkle) coating
- Assembled with split ring and treble hook
- Individually blister packed steel casting spoon
- Alternate sizes are available

Starting at \$4.25





5.25x22in Scrubber Golf Towel

- This heavyweight 3.5lb/dozen golf towel is 100% cotton and has a tri-folded design for scrubbing your golf balls and clubs
- Comes with a grommet and aluminum carabiner clip for attaching to your golf bag

Black

Navy

White

Starting at \$14.28

SM-7215

Golf Bag 6-Can Event Cooler

- 11" x 6" x 6"
- Holds up to 6 cans
- Features a fully insulated main compartment with a liner
- Back and front zippered pockets
- Removable and adjustable shoulder strap

Starting at \$10.52

Black

Hunter Green

Red

Royal



62386



Modern Divot Tool with Bottle Opener

Add this convenient divot tool to your golf bag. Made of durable stainless steel in a contemporary design, it doubles as a bottle opener for enjoying post-game refreshments.

- Convenient multi-tool
- Durable stainless steel
- Contemporary design
- Great for golf tournaments

Starting at \$6.74

Black

Navy

Silver

G-DTBO

Divot Tool Bottle Opener

Powder coated metal golf divot tool with bottle opener. Both sides are fully customizable in 4cp. Perfect giveaway for the corporate golf tournament.

- Fully decoratable
- Add a carabiner or keyring for convenience

Starting at \$2.99



LT4243



Scuba Luggage Tag

- 4.5" x 2.5"
- Scuba Vinyl
- White address card to insert into shaded area for privacy
- Use the grey loop cord to easily attach to your baggage
- Bright coloured tags to help you identify your luggage

- Black
- Red
- Lime
- Royal

Starting at \$1.90

SB8499

Phone Wallet

- 2.25" x 3.5"
- Silicone
- Phone wallet with 3M adhesive tape at the back
- Hold up to two cards
- Will not demagnetize your cards

- Apply to the back of your phone or case
- Fits most flat backed phones
- Bulk packed

- Black
- Orange
- Burgundy
- Purple
- Grey
- Red
- Hot Pink
- Royal
- Light Blue
- White
- Lime
- Yellow
- Mint

Starting at \$1.72



SM-1428



Responder 30-Piece First Aid Kit

- 5.31" x 6.69" x 2.16"
- Deluxe first aid kit in durable, zippered travel case with handle and internal organization pockets
- Includes 1 mini-scissor, 2 gauze swabs, 1 PBT bandage, 1 roll adhesive tape, 5 small adhesive bandages, 6 standard adhesive

bandages, 1 triangular bandage, 4 alcohol wipes, 1 pair disposable latex free vinyl gloves, 1 pair plastic tweezers, 1 CPR face shield and 6 safety pins

Starting at \$13.69

- Black
- Red

NW6631

Auto Litter Bag

- 8" x 10" x 4"
- Non woven 75 gram Polypropylene
- Straps are stitched and heat-sealed reinforced
- Two straps that attach with snap closure around your headrest posts
- Can also be hung from gear shift or

- other convenient locations
- Snap closure to main compartment to contain odours and contents

Starting at \$2.17

- Royal
- Red
- Black
- Lime





Vivid™ Vent Stick

- 1.375" W x 1" H x 2.2625" D
- Fresh, clean and long-lasting
- Extra large, full colour Fireglaze™ imprint area
- Gently slide into the vent to circulate fresh scents
- Neutralizes odours and releases a pleasant scent
- Your brand can be viewed and smelled every day
- DOME - 1.25" x 1" front

- Dark Blue/ New Car
- Tan/Creamy Vanilla
- Teal/Fresh Linen

Starting at \$2.15

CP8935

Ice Scraper

- 4" x 9.25" x 0.25"
- Plastic
- Coloured flat handle
- Clear 4" ice scraper blade
- Lightweight and easy to use
- Scrape frost, snow and ice from your vehicle windows
- Compact for storage



Starting at \$2.65

- Black
- Royal
- Red

CP9169



Bristol Trunk Organizer

- 21" x 12" x 14"
- 210D and 600D Polyester
- Three compartment trunk organizer
- Portable and collapsible
- Insulated middle cooler bag section with Aluminum silver liner and zippered closure
- Side open slash pocket
- Webbed carry handle at each end
- Elastic tie to keep closed when folded
- Two hook and loop fastener strips on the bottom to help stay in place

Starting at \$24.05

NW8407

Community Helper

- 13" x 7.5" x 7.5"
- Non Woven 100 gram Polypropylene
- Webbed carry handle on each side
- Bottom board sewn on one edge
- Go from the grocery cart straight to the trunk
- Folds flat for easy storage
- Use at home for shelving and closet organization
- Makes a great trunk organizer

Starting at \$10.58

- Royal
- Black





Roll-Up Banners

- Graphic Size: 33.5" W x 78.5" H
- Assembled Dimensions: 34.5" W x 83" H x 11.5" D
- Approximate Shipping Details: 8 lbs, 37" L x 5" H x 5" D
- 3-piece bungee pole
- Snap top graphic rail
- Offered in silver base with grey end caps
- Swivel feet for extra stability
- Includes carry bag
- Quick and easy to assemble

The economical retractable banner stand can be used as a standalone display or part of a large scale exhibit. The stylish silver base measures 34" wide and features grey endcaps. It includes customary features and two swivel feet for added stability, making it a great option as a quality display solution for any budget.

Starting at \$200.00

Pillowcase Stand

- Graphic Size: 33.5" W x 91.63" H
- Assembled Dimensions: 35" W x 92" H x 15" D
- Approximate Shipping Details: 8 lbs, 33" L x 11" H x 3" D
- Slip-over fabric graphic
- Carry bag included
- Easy to store and ship
- Quick to set up
- Available single sided or double sided
- Straight bungee-corded aluminum tube frame with rounded corners

Measures 31.5"W, 92"H and features a simple straight bungee-corded tube frame and a fabric graphic that simply slips over the frame. Perfect for any environment - from retail to trade show!

Starting at \$375.00





Tradeshow Classic Lanyard

Trade Show Classic comes printed in one color printed on one side (LTCP2S for double sided) with a choice of basic metal attachment. Over 20 colors to choose from.

Add an optional safety breakaway or detachable buckle.

Choice of lanyard width:
3/8", 1/2", 3/4" or 1"

Starting at \$2.10

Black, White, Yellow, Jello, Antique Gold, Rust, Light Orange, Khaki Beige, Flo Pink, Tomato, Scarlet Red, Burgundy, Deep Purple, Chip-Royal Blue, Danube, Ocean Blue, Sapphire, Electric Blue, Peru Blue, Green, Leprechaun, Flo Green, Chartreuse, Pewter, Silver Grey

Golf Bag 6-Can Event Cooler

7/8" x 36" (custom lengths available)

Printed full color both sides in vivid, high definition color.
Choice of a standard metal attachment included, or upgrade with a variety of add-ons

Optional safety breakaway or detachable buckle

Proudly made in Canada!

Starting at \$3.00



Lanyard, Non-Printed - 3/4"

3/4" x 36" (custom lengths available).

Non-printed lanyards with choice of standard metal attachment available in over 20 colors.

Add a safety breakaway or detachable buckle at surcharge.

Proudly made in Canada!

Starting at \$1.24

Black, White, Yellow, Jello, Antique Gold, Rust, Light Orange, Khaki Beige, Flo Pink, Tomato, Scarlet Red, Burgundy, Deep Purple, Chip-Royal Blue, Danube, Ocean Blue, Sapphire, Electric Blue, Peru Blue, Green, Leprechaun, Flo Green, Chartreuse, Pewter, Silver Grey

Retractable Badge Holders

- 1.16" Diameter
- Plastic
- Retractable badge reels includes 30" nylon cord, belt clip on the backside with a digital full color decal and optional epoxy dome
- Available as belt clip style or lanyard add-on



Starting at \$1.61

● Black ○ White ● Red ● Pink ● Royal ● Translucent Red

Sublimated Stretch Curved Fit Table Throw



Starting at \$216.65

- 72" W x 29" H x 30" D
- Sublimated Stretch Fit Table Throw, 6' table, closed back, 4 sided (Made in Canada)
- Available in every color, full color sublimated graphics on the entire 6ft table cloth.
- Stretch Fabric, Square corners, 4 leg hoops to tuck the table legs inside and give the contoured shape.
- 100% polyester, machine washable, wrinkle resistant.
- Tight, modern fit for standard 6' tables.
- Alternate sizes are available

Stand out from the competition at tradeshow with these clean look, stretch fit table covers. Four-sided table cover creates a lasting impression. Two-way Stretch Fabric. Simple storage. Closed back makes it easy to hide materials underneath table. Lightweight, convenient for travelling and shipping.

Sublimated Table Cloth, Drape style, 4 sided, Closed Back

- 130" x 87"
- Sublimated Table Throw for 6' table, closed back, 4 sided (Made in Canada)
- Available in every color, full color sublimated graphics on the entire 6ft table cloth
- Drape style tablecloth, simple storage.
- 100% polyester, machine washable, wrinkle resistant, fire retardant.
- Lightweight table cover, convenient for travelling and shipping.
- Alternate sizes are available

Four-sided table cover creates a lasting impression. Simple storage. Closed back makes it easy to hide materials underneath table. This table cloth will fit a standard 6' table. Compliant with flame retardants for exhibit halls.

Starting at \$158.31



Sublimated Table Cloth, Drape style, 3 sided, Open Back



- 156" x 60"
- Sublimated Table Throw for 8' table, open back, 3 sided
- Available in every color, full color sublimated graphics on the entire 8ft table cloth
- Drape style, simple storage.
- 100% polyester, machine washable, wrinkle resistant, fire retardant.
- Lightweight table cover, convenient for travelling and shipping.
- Alternate sizes are available

Three-sided table cover creates a lasting impression. Simple storage. Open back makes it easy to store materials underneath table. This table cloth will fit a standard 8' table. Compliant with flame retardants for exhibit halls.

Starting at \$149.98

SU638-2

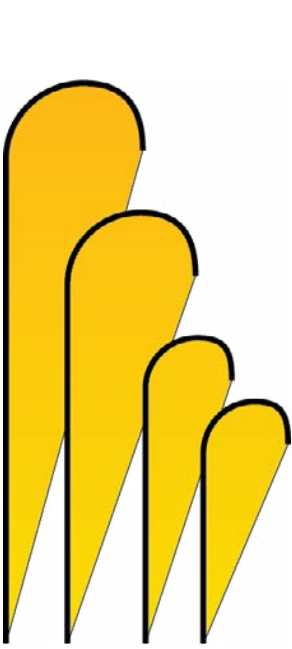
Sublimated Round Fitted Cruiser Table Throw

- 31.5" x 42.5"
- Round Fitted Cruiser Table Throw, Sublimated all over (Made in Canada)
- Fits on round table 31.5" in diameter.
- These table throws will fit perfectly around bar height tables. Will fit on cruiser tables or cocktail tables.
- 100% polyester, machine washable, wrinkle resistant, fire retardant.
- Lightweight table cover, convenient for travelling and shipping.

Round Fitted Cruiser Table Throw. Usage: Trade shows, Meetings, Career Fairs, Schools, Universities, Fundraisers. Price includes full color sublimation.

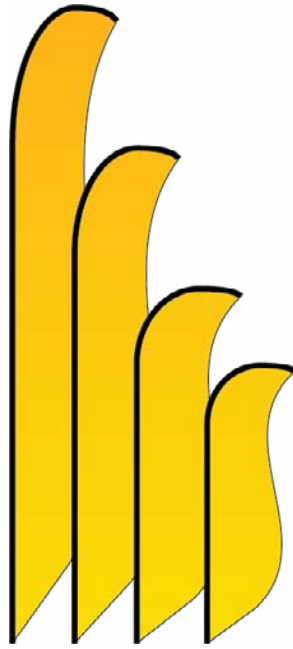


Starting at \$148.32



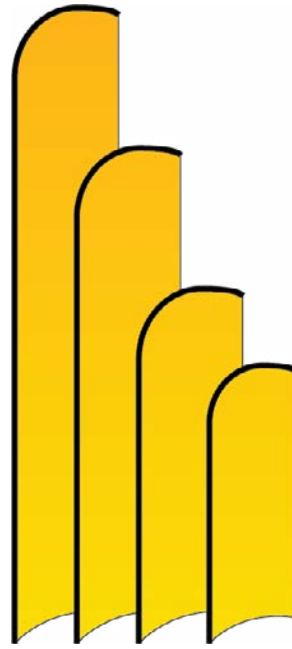
Teardrop

S: 29" x 68.5"
Built Height: 7.2 ft.
M: 29.5" x 86.6"
Built Height: 8.8 ft.
L: 41.3" x 122"
Built Height: 11.8 ft.
XL: 43.8" x 158.7"
Built Height: 15 ft.



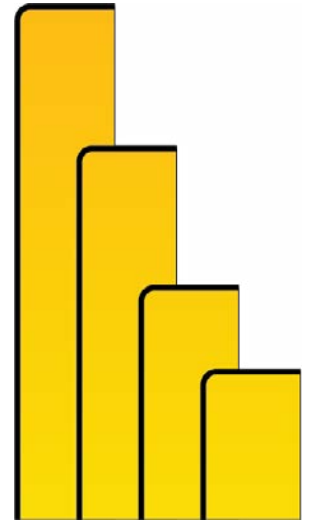
Sail

S: 24.8" x 78.7"
Built Height: 8.2 ft.
M: 29.5" x 100.4"
Built Height: 10 ft.
L: 29.5" x 140.2"
Built Height: 13 ft.
XL: 29.5" x 179.9"
Built Height: 16.4 ft.



Curved

S: 24.8" x 78.7"
Built Height: 8.2 ft.
M: 29.5" x 100.4"
Built Height: 10 ft.
L: 29.5" x 140.2"
Built Height: 13 ft.
XL: 29.5" x 179.9"
Built Height: 16.4 ft.



Straight*

S: 27.5" x 41.7"
Built Height: 5 ft.
M: 27.5" x 65.4"
Built Height: 7 ft.
L: 27.5" x 104.7"
Built Height: 10.3 ft.
XL: 27.5" x 144.7"
Built Height: 13.6 ft.

	Single Sided	Double Sided	Hardware*
Small	\$98	\$198	\$32
Medium	\$132	\$265	\$40
Large	\$165	\$332	\$48
X-Large	\$198	\$398	\$57

Setup fees may apply.



Scissor Stand - \$57

Ground Stake - \$32

Base Plate - \$65

*+\$8 for Straight Bar



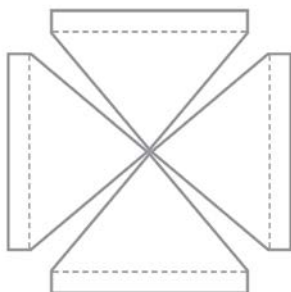


Custom tents are a great place to bring your audience together to deliver a strong promotional message. Suitable for exterior or interior use, tents provide shelter from the elements and an eye-catching venue for your brand. Our tents are uniquely engineered to deliver superior strength and durability while being portable and easy to setup. Quality craftsmanship complemented by 1 year hardware warranty. Standard tent canopies and optional walls are 100% polyester with special waterproofing and windproofing coatings. Hardware is 1.5" Professional grade, full-truss, collapsible and aluminum.

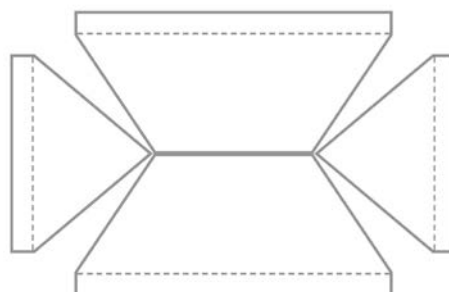
	Hardware	Tent Top	Single Sided Full Wall	Double Sided Full Wall	Single Sided Half Wall	Double Sided Half Wall
10 x 10	\$582	\$1082	\$415	\$665	\$165	\$332
10 x 15	\$832	\$1498	\$582	\$998	—	—
10 x 20	\$1065	\$1832	—	—	—	—

Optional Add-ons

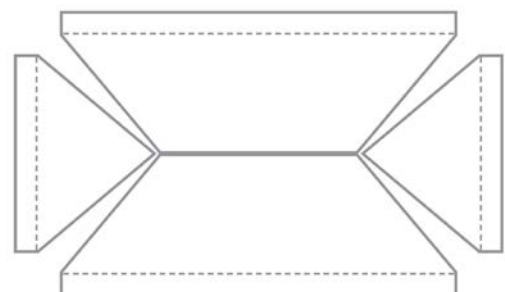
10' Roller Bag	20' Roller Bag	10 x 10 Side Wall Hardware	Tent Weight Bags (Set of 4)	Tent Hard Shipping Case
\$115	\$148	\$73	\$107	\$998



10' x 10'

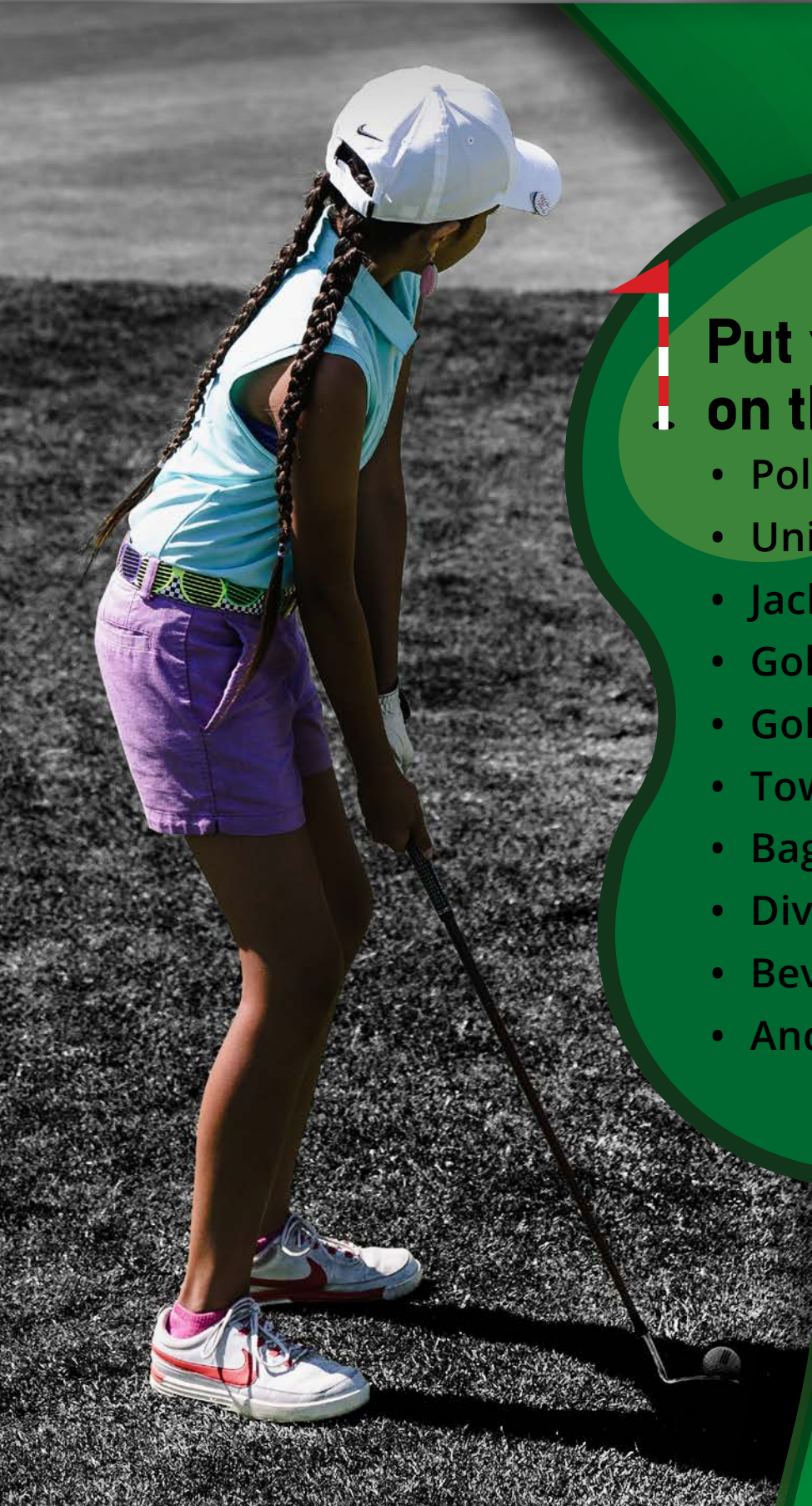


10' x 15'



10' x 20'

Standout from the Crowd



Put your Mark on the Course

- Polos
- Uniforms
- Jackets
- Golf Tees
- Golf Balls
- Towels
- Bags
- Divot Tools
- Beverage Coolies
- And Much More!



DREAMCATCHER
PROMOTIONS